

MITID DAT (Design Aptitude Test)

BDes_ 2024

PART B

Section A: General Awareness & Aptitude

Q1 "What kind of font is used in the logo of Indigo Airlines?"



1. Serif
 2. Sans Serif
 3. Slab Serif
 4. Script
-

Q2. What are the colours used in the identity of Google?

- 1 Red-Green-Blue
 - 2 Red-Yellow-Blue
 - 3 Red-Orange-Green-Blue
 - 4 Red-Yellow-Green-Blue
-

Q3. Which of the following animals is shown in the identity of Assam Department of Tourism?

- 1 One-horned Rhino
 - 2 Sumatran Rhino
 - 3 Jawvan Rhino
 - 4 Two horned black rhino
-

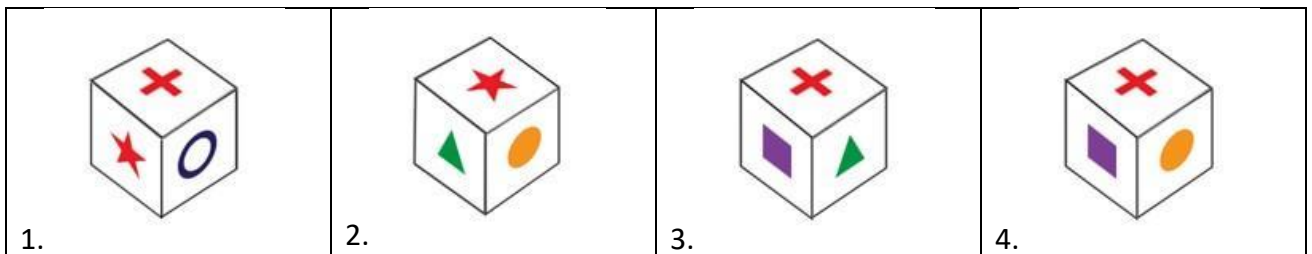
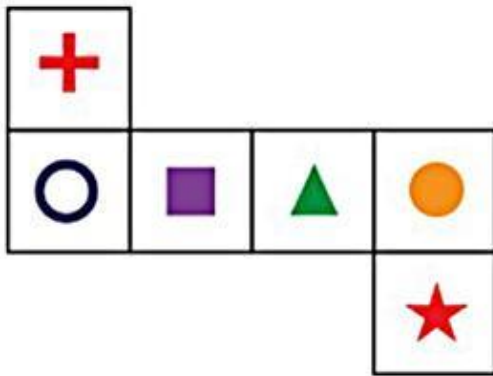
Q4. Which of the following is known to be the traditional Indian dance of leather puppets?

1. Sakhi Kundhei Nata
2. Beni Putul
3. Kalasutri Bahulya
4. Tolu Bommalatta

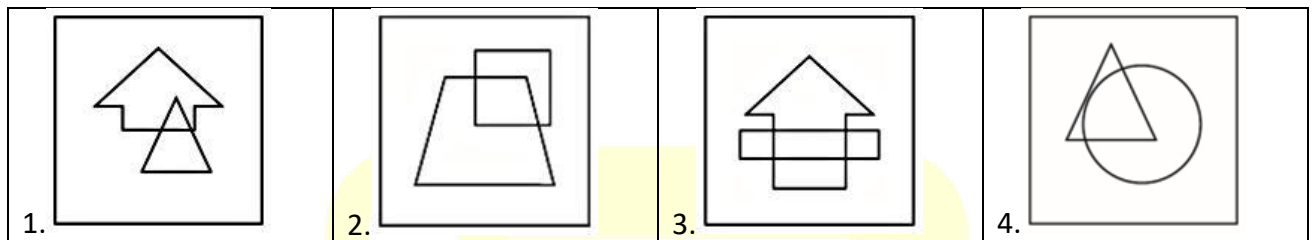
Q5. In which of the following cities is MoMA (Museum of Modern Art) located?

1. Madrid
2. London
3. New York
4. San Francisco

Q6. Choose the cube which will be formed on folding the given question figure.



Q7. "What replaces the question mark?"



Q8. If a person walks at 14 km/hr instead of 10 km/hr, he would have walked 20 km more. The actual distance travelled by him is:

1. 50 km
2. 56 km
3. 70 km
4. 80 km

Q9. How many squares can you see?



1. 25
2. 31
3. 36
4. 40

Q10. Rahul put his timepiece on the table in such a way that at 6 P.M. hour hand points to North. In which direction the minute hand will point at 9.15 P.M. ?

1. South-East
2. South
3. North
4. West

Q11. The perimeter of a circle having radius 5cm is equal to

1. 30cm
2. 3.14 cm
3. 31.4 cm
4. 40 cm

Q12. The wheel of a motorcycle is of radius 35 cm. The number of revolutions per minute must the wheel make so as to keep a speed of 66 km/hr will be

1. 50
2. 100
3. 500
4. 1000

Q13. Rohan is given a mixture of salt and water. What method can he use to separate the salt from the water?

1. Filtration
 2. Distillation
 3. Evaporation
 4. Magnetic separation
-

Q14. Maya is using a convex lens to focus sunlight onto a piece of paper. What will happen to the paper if she moves it closer to the lens?

1. The paper will catch fire.
 2. The paper will remain unaffected.
 3. The paper will become colder.
 4. The paper will turn black.
-

Q15. The main reason for the blueness of the sky is –

1. Due to the presence of water vapour
 2. Due to the absorption of blue light in the air
 3. Due to the scattering of sunlight by air molecules
 4. None of the above
-

Q16. The velocity of light is maximum in

1. Glass
 2. Water
 3. Vacuum
 4. Diamond
-

Q17. What is the main objective of sustainable development?

1. Meeting the needs of the present without compromising future generations
2. Exploiting natural resources for economic growth
3. Maximizing profits for corporations
4. Maintaining ecological balance

Q18. Find the meaning of the highlighted word in the following sentence:

She was acutely conscious of her fugacious youth.

1. enticing
2. elusive
3. continual
4. disappearing

Section B: Design & Analytical Thinking

Q19. Complete the sentence by choosing the right options:

I'm surprised to hear that you've seen her here in Jaisalmer, because she _____ to be abroad these days."

1. is proposed
2. is suggested
3. is supposed
4. is estimated

Q20. The first green corridor in India was created in which city?

1. New Delhi
 2. Chennai
 3. Mumbai
 4. Pune
-

Q21. Why are cadaver organs proposed to be airlifted according to the National Organ and Tissue Transplant Organisation (NOTTO)?

1. To increase public awareness about organ donation
 2. To reduce the risk factor associated with organ transplantation
 3. To ensure organs reach super-speciality hospitals quickly
 4. To lower the cost of heart transplant surgeries
-

Q22. What is the main challenge highlighted in the passage regarding organ transplantation in India?

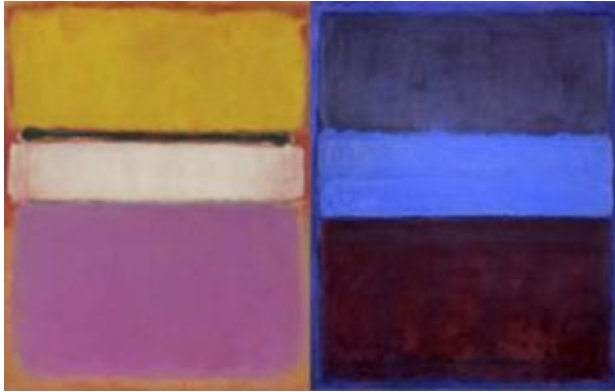
1. Lack of awareness about organ donation
 2. Shortage of advanced healthcare facilities
 3. High cost of postoperative medication
 4. Inadequate availability of organ donors
-

Q23. What is the Japanese art of flower arrangement called?



1. Ikebana
 2. Vase of Flowers
 3. Bouquet
 4. Still Life
-

Q24. These are famous paintings by Mark Rothko, What do you think is artist is trying to explore?



1. Exploring basic geometry
2. Exploring colour harmony
3. Exploring space composition
4. Exploring emotions

Q.25. This monumental sculpture is called ""Cloud gate"". What could be the reason of this title?



1. Because it reflects the cloud
2. Because it has a spiritual connection through the cloud
3. It reflects the distorted city line and skyline at the same time
4. Because it has ambiguity that the viewer finds themselves between the cloud and the land

Section C: Creative Ability

Q.26. "Amidst a sizable population, especially young individuals relocating for education and work, environmental awareness is high. However, their access to renewable energy, like solar power, is hindered due to rental living and frequent apartment changes. The second problem is that the smaller apartments may not have balcony or an area which receives sunlight continually.

Can you design a portable, plug-and-play solar generator tailored for young renters that could address this challenge?

Be as creative as you can. Explain your concept through sketches drawn with a pen (pencil drawings will not be accepted). Use as little text as possible."

Q.27 "Brushing Guide for Toddlers: This instructional guide easy steps for teaching toddlers to brush their teeth. With colourful illustrations and simple instructions, children learn to apply toothpaste, brush gently in circles, and rinse.

In the provided answer sheet, use six frames to create simple pictures illustrating how to brush teeth step by step.

You can use only pen, colour pencils to work on the same.
You can use up to six frames to demonstrate the task."

Q.28 "Please take a close look at the illustration given below.



An everyday object has been creatively converted to other object through illustration.

You'll find 5 pictures on your answer sheet. Use your imagination and creatively transform each object to functional kitchenware.

Draw in a given space as similar to shown in the above reference image"

Q.29 "Excerpt from ""The Blue Umbrella"" by Ruskin Bond:

The rains set in, and the sun only made brief appearances. The hills turned a lush green. Ferns sprang up on walls and tree trunks. Giant lilies reared up like leopards from the tall grass. A white mist coiled and uncoiled as it floated up from the valley. It was a beautiful season, except for the leeches. Every day, Binya came home with a couple of leeches fastened to the flesh of her bare legs. They fell off by themselves just as soon as they'd had their thimbleful of blood, but you didn't know they were on you until they fell off; and then, later, the skin became very sore and itchy. Some of the older people still believed that to be bled by leeches was a remedy for various ailments. Whenever Ram Bharosa had a headache, he applied a leech to his throbbing temple.

On the answer sheet provided to you, create a visual representation of the above lines in one single image that encapsulates the genre and the atmosphere of the paragraph.

You can use only a pen, colour pencils to work on the same.
(pencil drawings will not be accepted)"

